

The
Electoral
Commission

Do you vote by post in Wales?

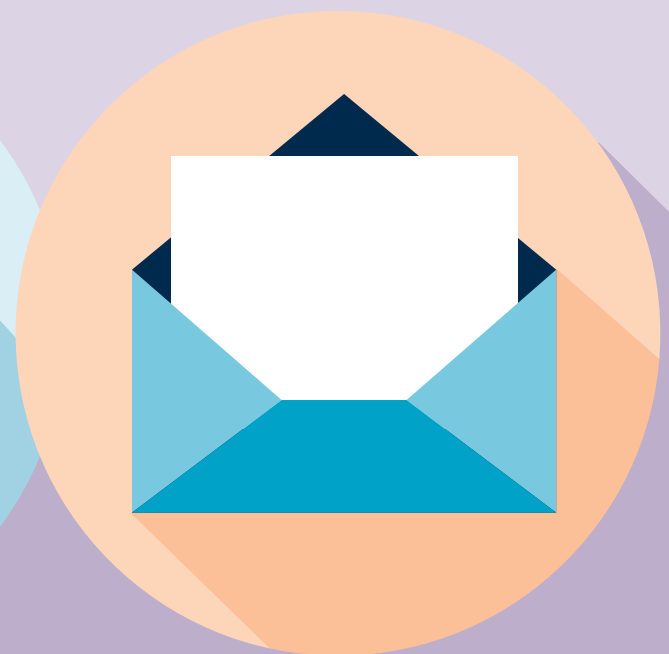
If so, you need to re-apply for your postal vote every 3 years



If you applied for a postal vote on or before 30 January 2024, you have to re-apply by **31 January 2026**



If you don't re-apply by then, your postal vote will expire



These changes apply to UK Parliament general elections, Police and Crime Commissioner elections, by-elections and recall petitions

They **do not** apply to Senedd and local elections in Wales

For more information visit:
electoralcommission.org.uk/ways-to-vote

